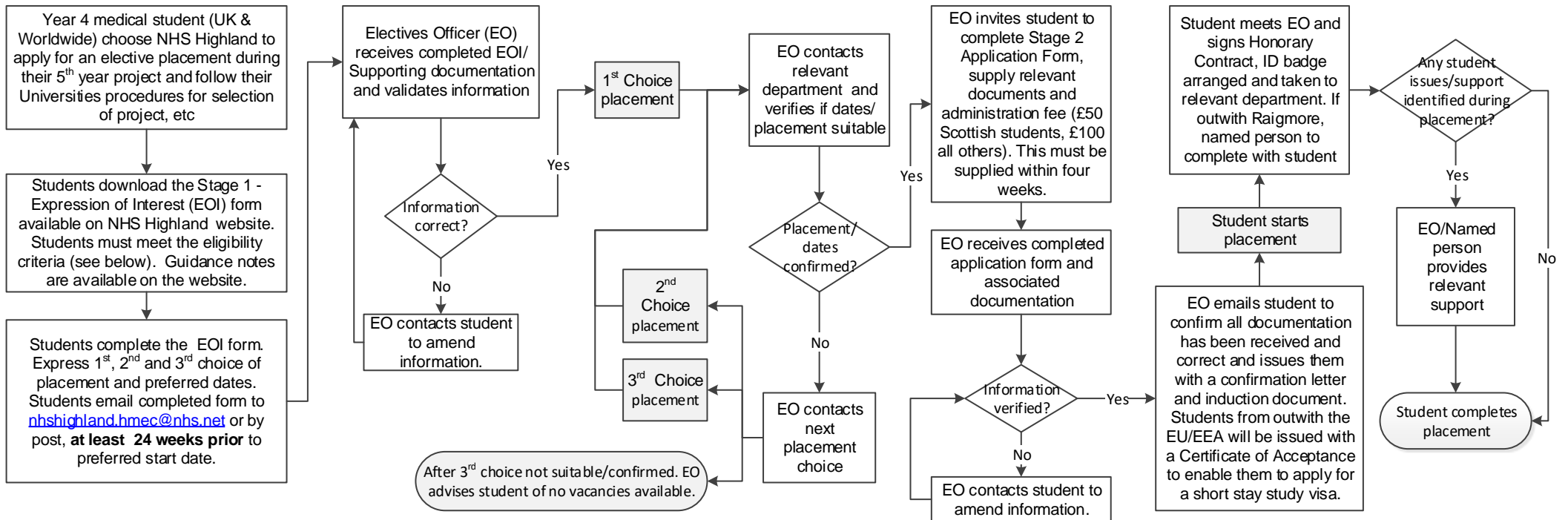


## Scotgem students – Placements August to May – set rotation of placements (not electives)

## University of Aberdeen Medical students – NHS Highland Placements (not electives) Year 4 students – Year round (June to May placements) Year 5 students – August to April placements



### NHS Highland website

<https://www.nhshighland.scot.nhs.uk/CAREERS/MEDICALEDUCA TION/UME/Pages/MedicalStudentsElectives.aspx>

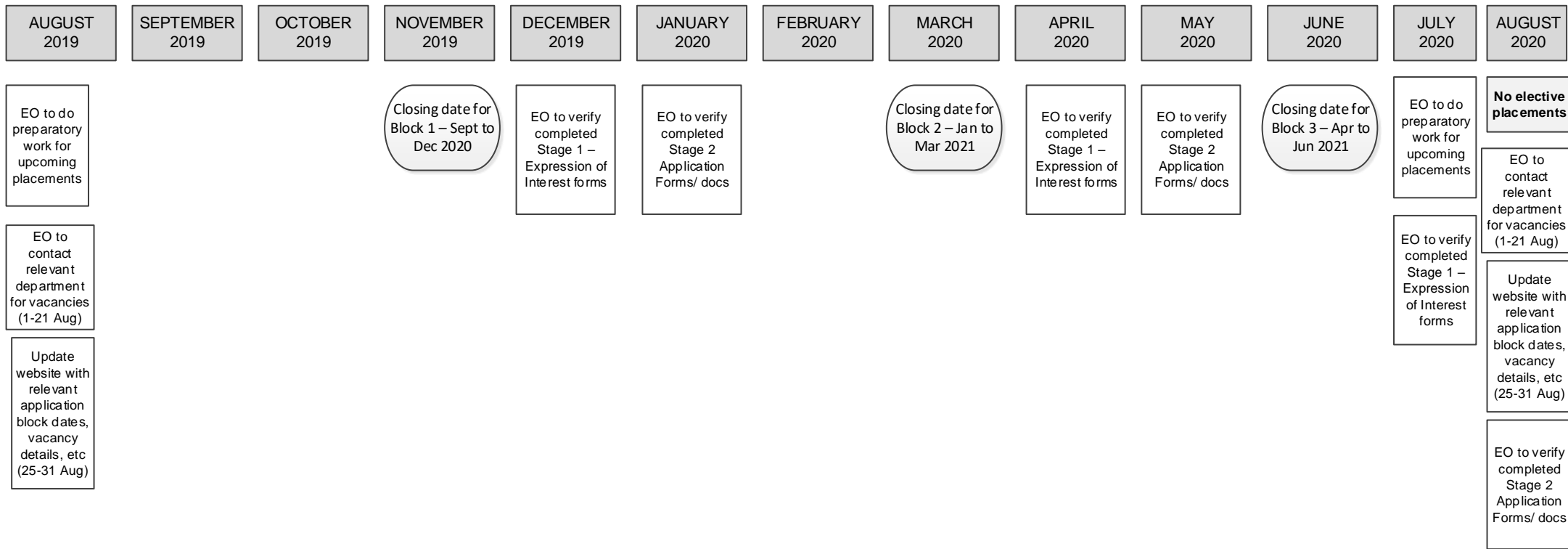
### Eligibility

Those interested in applying for an elective placement should note the following:

- Hospital and specialty availability depends on popularity, other undergraduate student commitments and on the number of consultants available to provide supervision.
- Electives are offered for a period of 4-8 weeks. Please note that we will not consider requests for longer or shorter placements.
- It is essential for all medical elective students from outside the EU/EEA to check if they require a short stay study visa.
- International students need to be able to speak English to a reasonable level.
- Students must be able to finance their own travel, accommodation and living expenses.
- We expect applicants to be in their last or penultimate year of study of their Medical degree, as students are expected to have done some clinical training before they can undertake an elective in NHS Highland. Students in earlier years of their degree will be considered.

### Supporting Stage 2 documents

- 1 x passport photograph
- Copy of passport (front cover and front page)
- Transcripts of grades or exams passed to date (translated officially into English if applicable)
- Copy of completed Disclosure Scotland PVG form and required fee or your PVG record, enhanced disclosure from Access NI or DBS Clearance
- Letter of good standing from your local Police or Department of Justice (if applicable)
- Completed Section 10 (University Declaration of Support)
- Completed Health Declaration
- Enclosed admin fee for correct amount (payable by cheque to NHS Highland) or BACS payment  
Scottish Medical School students (£50) (if applicable)  
All other Medical School students (£100) (if applicable)



EO to liaise with relevant departments/named persons with updated information

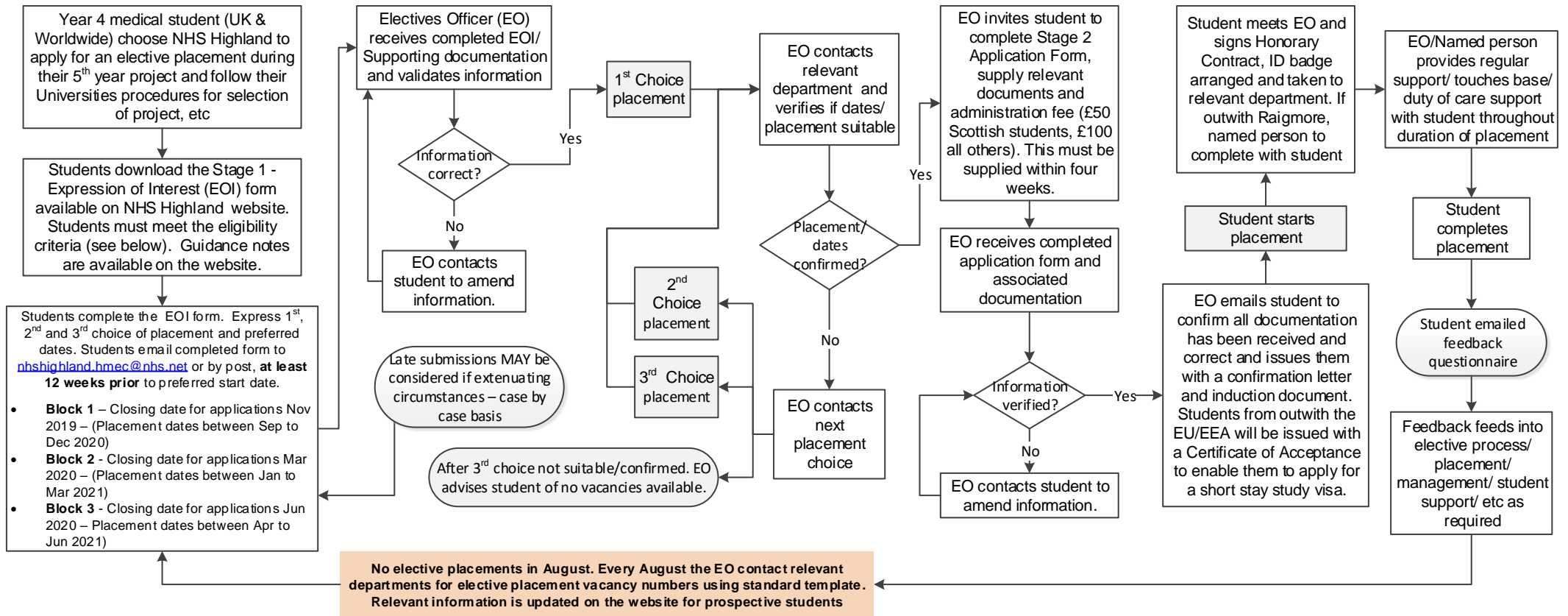
EO to update website with any updated information

**IDEAS**

- Standard template to depts for vacancy numbers
- Regular support/contact with students on placement – how often?
- Concerns – duty of care process?
- Content on website – showing vacancies available? 3 diff block application forms with cut off dates
- Student evaluation of placement questionnaire on completion of placement – questions/feedback?
- Late submissions – consider under certain circumstances? ie if another placement falls through and vacancy available
- Consider different colours/ref nos for the EOI blocks/Stage 2 App forms so you can tell them apart

**Scotgem students – Placements August to May – set rotation of placements (not electives)**

**University of Aberdeen Medical students – NHS Highland Placements (not electives)  
Year 4 students – Year round (June to May placements)  
Year 5 students – August to April placements**



**NHS Highland website**  
<https://www.nhshighland.scot.nhs.uk/CAREERS/MEDICAL/EDUCATION/UME/Pages/MedicalStudentsElectives.aspx>

**Eligibility**

Those interested in applying for an elective placement should note the following:

- Hospital and specialty availability depends on popularity, other undergraduate student commitments and on the number of consultants available to provide supervision.
- Electives are offered for a period of 4-8 weeks. Please note that we will not consider requests for longer or shorter placements.
- It is essential for all medical elective students from outside the EU/EEA to check if they require a short stay study visa.
- International students need to be able to speak English to a reasonable level.
- Students must be able to finance their own travel, accommodation and living expenses.
- We expect applicants to be in their last or penultimate year of study of their Medical degree, as students are expected to have done some clinical training before they can undertake an elective in NHS Highland. Students in earlier years of their degree will be considered.

**Supporting Stage 2 documents**

- 1 x passport photograph
- Copy of passport (front cover and front page)
- Transcripts of grades or exams passed to date (translated officially into English if applicable)
- Copy of completed Disclosure Scotland PVG form and required fee or your PVG record, enhanced disclosure from Access NI or DBS Clearance
- Letter of good standing from your local Police or Department of Justice (if applicable)
- Completed Section 10 (University Declaration of Support)
- Completed Health Declaration
- Enclosed admin fee for correct amount (*payable by cheque to NHS Highland*) or BACS payment  
 Scottish Medical School students (£50) (if applicable)  
 All other Medical School students (£100) (if applicable)